

# CNE - CSE 10 poles + ⊕ 16A - 500V



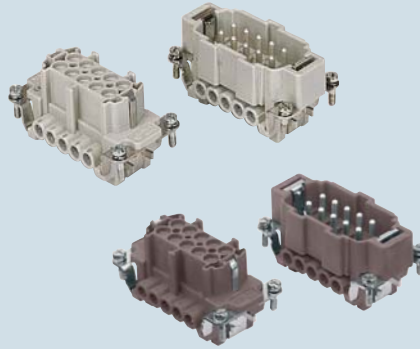
enclosures: size "57.27"

- standard ..... page: 184 - 188
- for 180 °C ..... page: 194
- aggressive environments page: 195
- EMC ..... page: 196

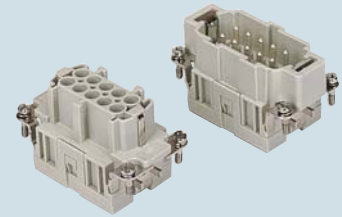
panel supports:  
COB ..... page: 258 - 259

- characteristics according to EN 61984:  
**16A 500V 6kV 3**
- UL, CSA, CCC, GL certified
- for maximum current load, see the insert load curve section on page 31

## inserts, screw terminal connections



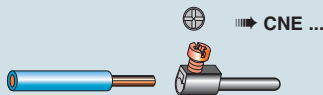
## inserts, spring terminal connections



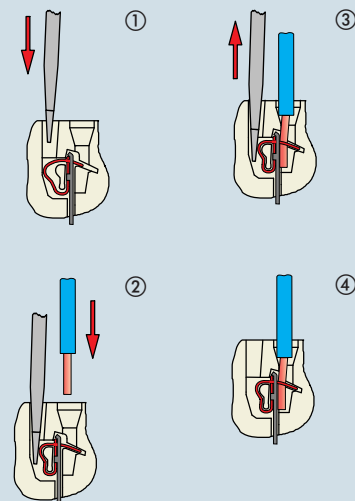
description	part No.	part No.
indirect, with plate 1) female inserts with female contacts male inserts with male contacts	<b>CNEF 10 T</b> <b>CNEM 10 T</b>	
direct, without plate 2) female inserts with female contacts male inserts with male contacts	<b>CNEF 10 TX</b> <b>CNEM 10 TX</b>	
indirect, with plate 1), use in up to 180 °C female inserts with female contacts, brown male inserts with male contacts, brown	<b>CNEF 10 RYT *</b> <b>CNEM 10 RYT *</b>	
spring terminal female inserts with female contacts male inserts with male contacts		<b>CSEF 10</b> <b>CSEM 10</b>

- 1) for non-prepared conductors
- 2) for bush terminal conductors

\* CNE...RY version without plastic wire insertion guide cover available on request.

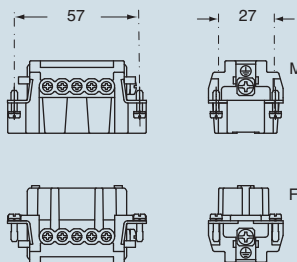


### connection with spring terminal

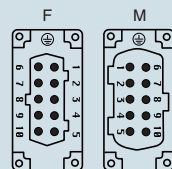


dimensions shown are not binding  
and may be changed without notice

### dimensions in mm

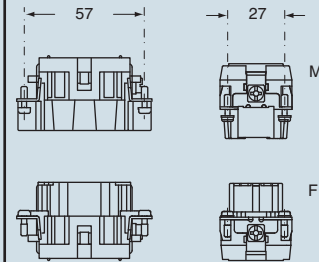


### contacts side (front view)

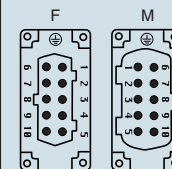


- inserts with plate, for section conductors:  
0.5 - 2.5 mm<sup>2</sup> - AWG 20 - 14
- inserts without plate, for section conductors:  
0.25 - 2.5 mm<sup>2</sup> - AWG 24 - 14
- torsion couple recommended for conductor fastening screws and stripping length see section feature of inserts on page 13

### dimensions in mm



### contacts side (front view)



- inserts for section conductors:  
0.14 - 2.5 mm<sup>2</sup> - AWG 26 - 14
- stripping length see section feature of inserts on page 13